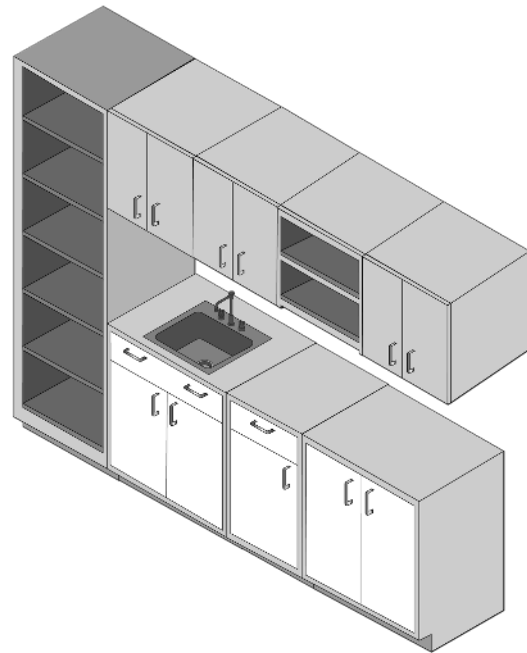


# AGILE PANTRY

The Office Design of Tomorrow is Here

## RECONFIGURE YOUR GATHERING SPACE

Your office kitchen is the social hub and gathering place for employees — make it a place that encourages an inclusive and desirable company culture. Offer an open-concept space that provides employees with a collaborative and innovative place to meet. **Reimagine your office kitchen with the Agile Pantry.**



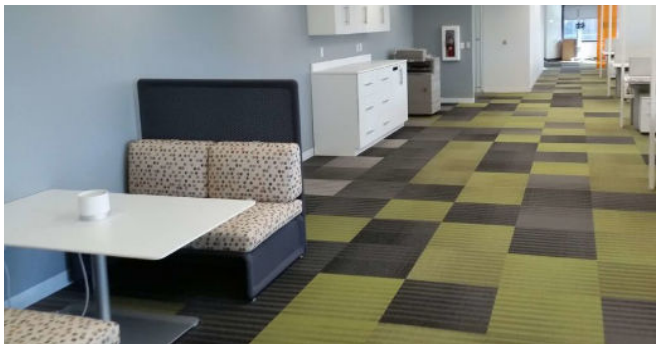
## FOSTER INNOVATION & COLLABORATION

A loud, closed-off kitchen is the last thing an office needs in a kitchen space. With sound proofing panels on your modular walls, sound won't be an issue and employees can have collaborative conversations without interruptions. Incorporate a large workplace island as a gathering place for employees that can be finished with solid surface materials. Finish off your kitchen with custom casework to improve the functionality and to match the look and feel of your space.



## REIMAGINE KITCHEN STORAGE

Employees that bring their own lunch need ample space to store their food. By offering storage cubbies, employees have a dedicated space to store their food. Offer a grab and go station for those complimentary snacks that employees love when they need a midday pick-me-up. Plus a trash and recycle station that keeps the kitchen tidy without having bulky, loud trash receptacles that could get messy. Everything in your kitchen has the ability to be reconfigured with the modular casework, allowing you to adjust the layout whenever necessary.



## CUSTOMIZE YOUR KITCHEN

With a wide variety of finishes, colors, and textures to choose from, you can completely customize your agile pantry to match your company or brand. The office kitchen doesn't have to be the one space that is not cohesive with the rest of your office space. Create the perfect kitchen for your employees and your office.

**LET YOUR KITCHEN BE FLEXIBLE.** Don't let your pantry be a rigid space with no room to grow or adapt. Ask employees how they currently use the kitchen or how they would like to use the space and improve the space for everyone in the office. Add solid-surface countertops, open pantries for communal items, booths and a movable island — no matter how you decide to update your space, you have options that are flexible and future-proofed.

